

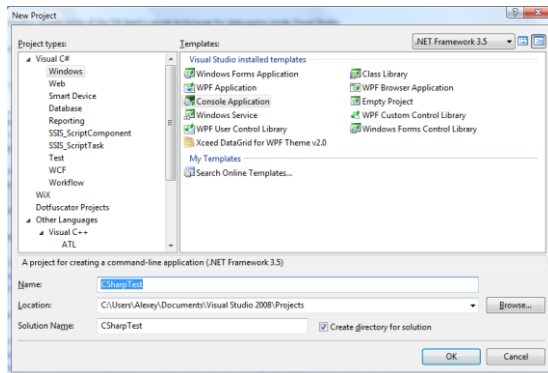
DlpLib HowTo

This article describes how to incorporate DlpLib Nautilus component (developed by IDScan.net)
You can download free Example projects from our web-site <http://www.IDScan.net/dlplib>

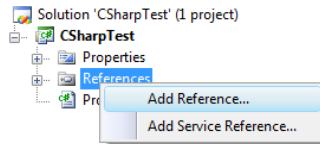
First you need to install DlpLib.msi. Let's assume that it's installed using default path C:\Program Files\Nautilus\DlpLib.

C#

1. Install any version of Microsoft Visual Studio. You can download free Express Edition here <http://www.microsoft.com/express/download/default.aspx>
2. Create a new project. In this example it is Console Application:



3. Add reference to the library DlpLib.dll. Under tab **Browse** select the file DlpLib.dll.



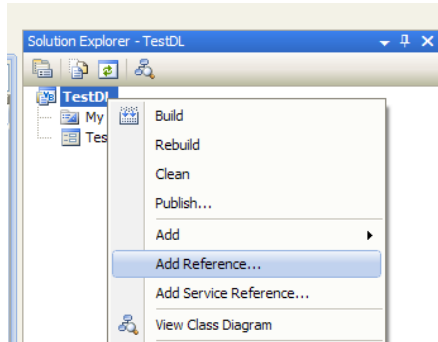
4. Now you are ready to write a program. Let's write a simple example:

```
static void Main(string[] args)
{
    string scanned_text = File.ReadAllText(@"C:\Program Files\Nautilus\DlpLib\testdl.txt");
    DriverLicense lic = new DriverLicense();
    lic.KeyboardReader = false;
    if (lic.ExtractInfo(scanned_text))
    {
        // the data of the license has been successfully parsed.
        Console.WriteLine("Name of the carholder is {0}", lic.FullName);
    }
}
```

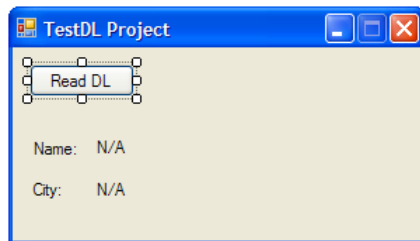
Please note that if you use a device attached via keyboard port you must set **lic.KeyboardReader** to "True".

VB.NET

1. Install any version of Microsoft Visual Studio. You can download free Express Edition here <http://www.microsoft.com/express/download/default.aspx>
2. Create a new project. In this example it is Windows Application:
3. Add reference to the library DlpLib.dll. Under tab **Browse** select the file DlpLib.dll



4. Now you are ready to write a program. Place a few labels and a button on the form.



5. Create an event for the Button click.

```
Imports System.Collections.Generic
Imports System.IO
```

```
Public Class TestDLForm
```

```
Private Sub Button1_Click(ByVal sender As System.Object, ByVal e As System.EventArgs) Handles Button1.Click
```

```
    'Path to the Example File
    Dim fileName = "C:\Program Files\Nautilus\DlpLib\testdl.txt"

    Dim lineList As String = File.ReadAllText(fileName)

    'Make sure you have Reference to DlpLib.dll (use command Add Reference...)
    Dim DL As New Nautilus.DriverLicense

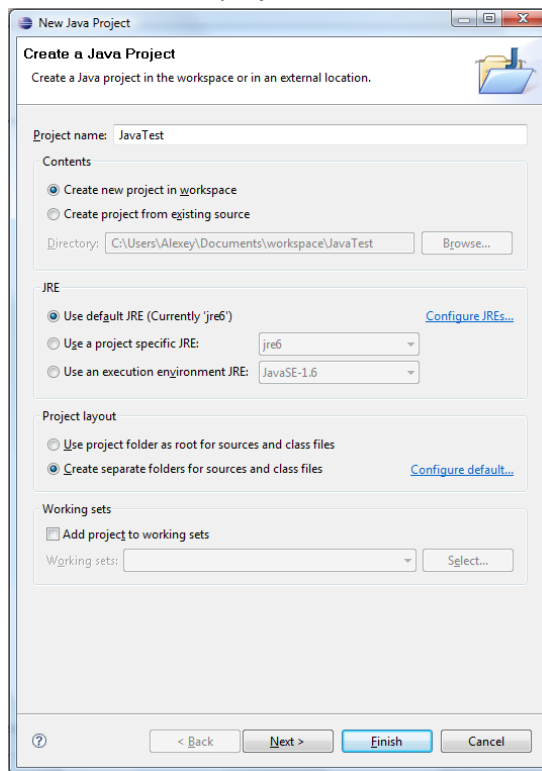
    If DL.ExtractInfo(lineList) = False Then
        MsgBox("Can't Recognize DL", MsgBoxStyle.Information)
    Else
        Me.lbl_Name.Text = DL.FullName
        Me.lbl_City.Text = DL.City
    End If
```

```
End Sub
End Class
```

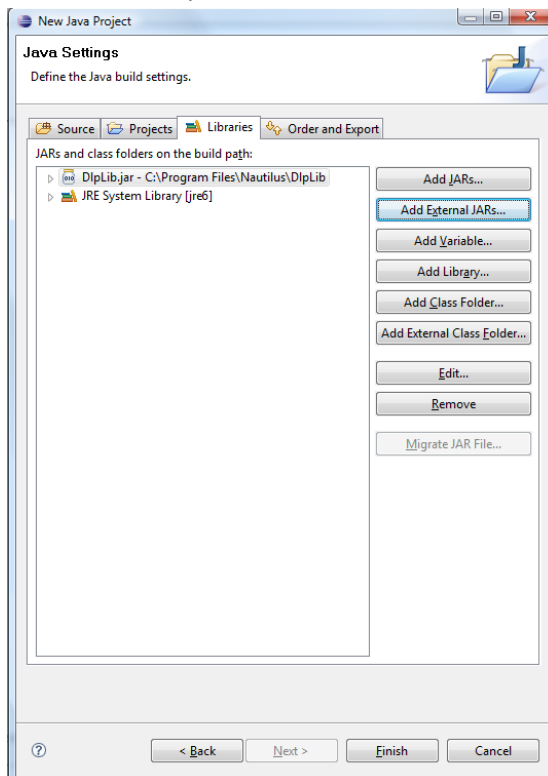
Please note that if you use a device attached via keyboard port you must set **DL.KeyboardReader** to "True".

Java

1. Install any IDE. This example is based on Eclipse, you can download free copy from: <http://www.eclipse.org>
2. Create a new Java project and click Next



3. On the next step select a tab Libraries and click Add External JARs and add DlpLib.jar



4. Click Finish. Now you are ready to write a program. Let's write a simple example:

```
public static void main(String[] args)
throws SecurityException, UnsatisfiedLinkError, UnsupportedOperationException,
FileNotFoundException, IOException
{
    nautilus.dlplib.DriverLicense lic = new nautilus.dlplib.DriverLicense();
    FileReader f = new FileReader("C:\\Program Files\\Nautilus\\DlpLib\\testdl.txt");
    BufferedReader fis = new BufferedReader(f);
    String s, text = new String();
    while ((s = fis.readLine()) != null) text += s + "\n";
    fis.close();
    lic.setKeyboardReader(false);
    boolean res = lic.extractInfo(text);
    if (res) {
        System.out.println(lic.getFullName());
    }
}
```

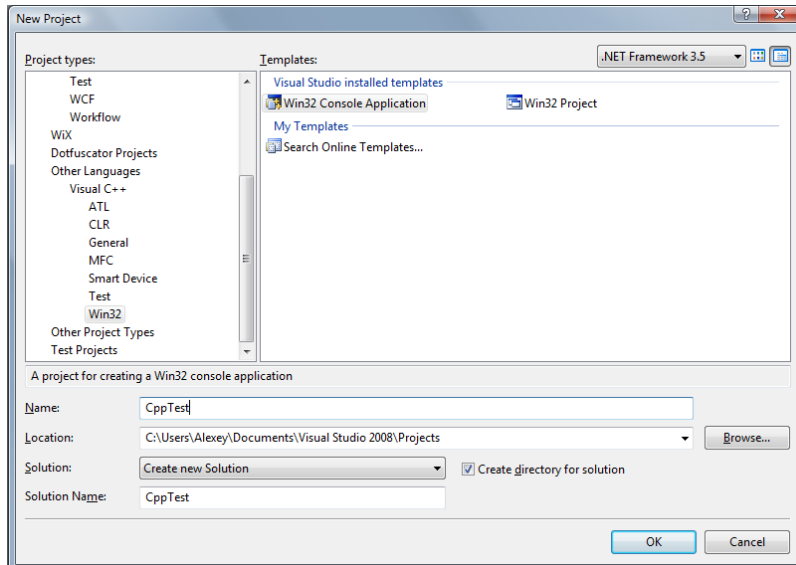
Please note that if you use a device attached via keyboard port you must use **lic.setKeyboardReader(true)**.

DlpLib.jar contains Java class with native methods. It uses c++ library DlpLibBridge.dll.

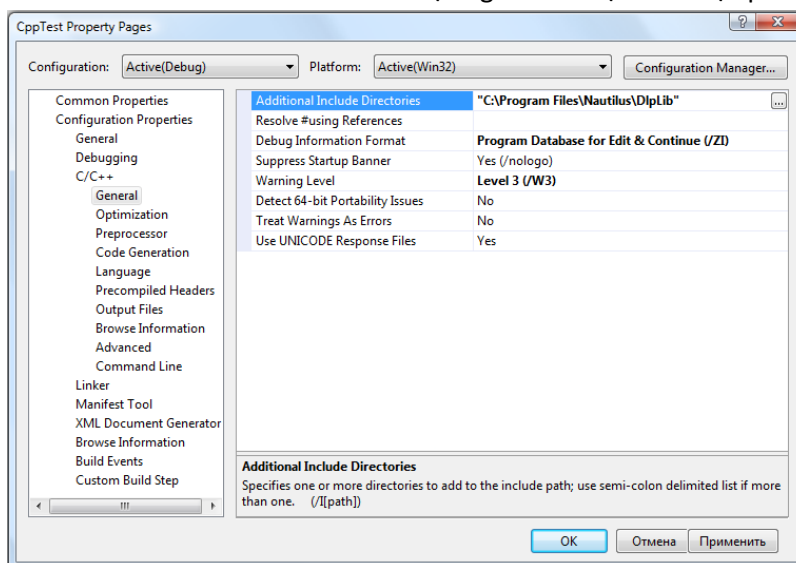
DlpLibBridge.dll must be in the Windows PATH variable, therefore ensure that it's located in the current directory or in C:\\Windows or C:\\Windows\\System32 (assuming that your Windows is installed in C:\\Windows).

C++

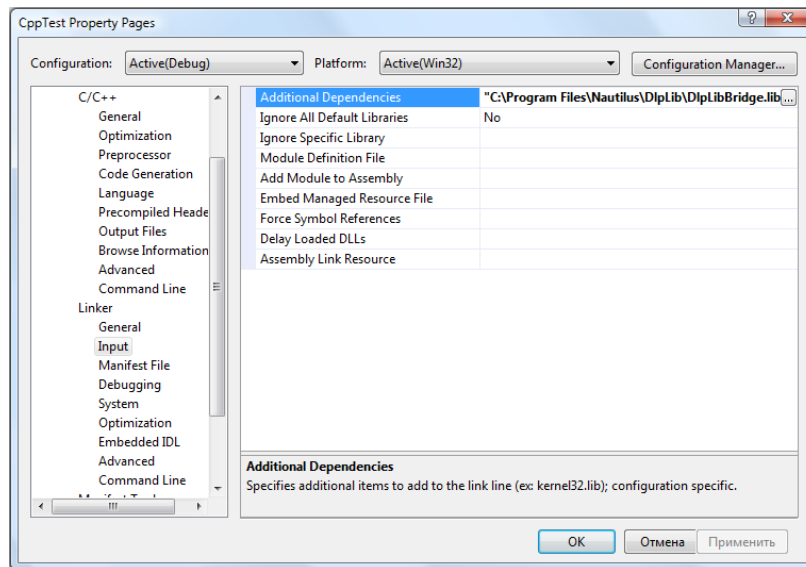
1. Install any version of Microsoft Visual Studio. You can download free Express Edition here <http://www.microsoft.com/express/download/default.aspx>
2. Create a new project. In this example it is Win32 Console Application:



3. Add an additional include folder "C:\Program Files\Nautilus\DlpLib"



4. Add an additional library DlpLibBridge.lib. It's a proxy for DlpLib.dll



5. Now you are ready to write a program. Let's write a simple example.

```
#include <iostream>
#include <fstream>
#include <vector>
#include "NativeExport_Nautilus_DriverLicense.h"
int _tmain(int argc, _TCHAR* argv[])
{
    std::vector<wchar_t> scanned_text;
    std::ifstream dlfile("C:\\Program Files\\Nautilus\\DlpLib\\testdl.txt");
    if (dlfile.is_open())
    {
        while (!dlfile.eof())
        {
            wchar_t ch = static_cast<wchar_t>(dlfile.get());
            scanned_text.push_back(ch);
        }
        scanned_text.push_back(0);
        dlfile.close();
    }
    NativeExport_Nautilus_DriverLicense lic;
    lic.set_KeyboardReader(false);
    if (lic.ExtractInfo(&scanned_text[0]))
    {
        std::wcout << lic.get_FullName() << std::endl;
    }
    return 0;
}
```

Please note that if you use a device attached via keyboard port you must use `lic.set_KeyboardReader(true)`.